

PART OF SW 1/4 OF NE 1/4
SECTION 20, T.6N., R.1W., S.L.B. & M.

IN OGDEN CITY
SCALE 1" = 60'

TAXING UNIT: 25

SEE PAGE 114

CHILDS AVE.
N0°58'0"E

12TH STREET

STREET

N89°9'45"W

N0°58'E 1026.20' &
N89°9'45"W 1697.70' FR.
SE COR. OF NE 1/4

WOODBURY 12TH STREET
SUBDIVISION
SEE PAGE 260

ARBY'S 12TH
COMMERCIAL SUBDIVISION
SEE PAGE 246

WOODBURY 12TH
STREET SUB 1ST AMD
SEE PG 271

150.00'
RONALD J TERKELSON
121140105
7,612 SQ FT

155.5'±
DONALD E DAWSON
& WF KATHY L
121140002

155.5'±
DENNIS A ANSTEY
121140001

155.5'±
MARTIN N FRANCO
121140008

150'
REED J BARKSDALE
121140009

150'
MARK W YOUNG
121140012

150'
HASSAN NAMAZI
121140011

150'
EDWIN LUSK
121140048

150'
DOUGLAS J WARREN
& WF JILL A
121140049

150'
BROOKSIDE TOWN HOMES
SEE PAGE 183

150'
OGDEN TOWN HOMES, LLC
121140037

150'
OGDEN CITY
121140034

150'
IHOP PROPERTY LLC
121140100
13,670 SQ.FT.

LINCOLN AVE
OGDEN CITY CORPORATION
121140080

OGDEN CITY
121140038

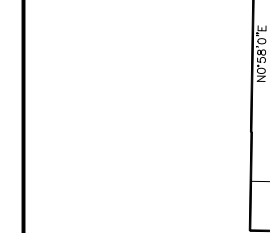
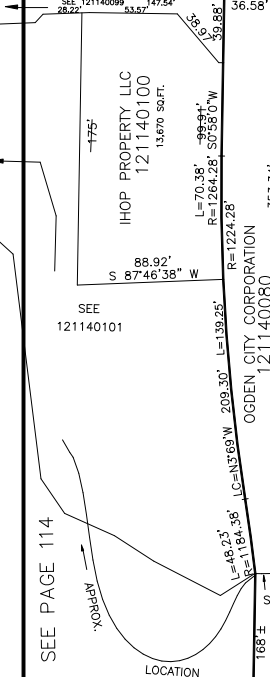
OGDEN CITY
121140034

OGDEN CITY
121140038

OGDEN CITY
121140034

OGDEN CITY
121140034

OGDEN CITY
121140034



SEE PAGE 114-2